

Monday 1st June 2020

LO: To make inferences from an image about a story.

This half term we will be reading the well-known and loved Harry Potter and the Philosopher's Stone. You can read the PDF version online or read our own personal copy.



Your Task:

1. Have a close look at the 3 front covers from Harry Potter and the Philosopher's Stone, some are book covers and others for film.
2. Use what you can see on the covers to infer information about the following:
 - Genre: What type of story do you think this is and why? (Comedy, fantasy, horror..)
 - Characters: Who do you think are the main characters and what can you infer about them from the front covers?
 - Setting: Where do you think the story is set and why?
 - When: During what time period is the story set? (Past, present future, modern, historical)
 - Prediction: What do you think will happen in the story based on the front covers?

REMEMBER: Write your inferences based on what you can see and infer, rather than what you may already know about the text.

Example 1:

Characters: I think the main character of the story is Harry Potter as that is the title of the book and it is written in bold, capital letters and is on the front of all the covers.

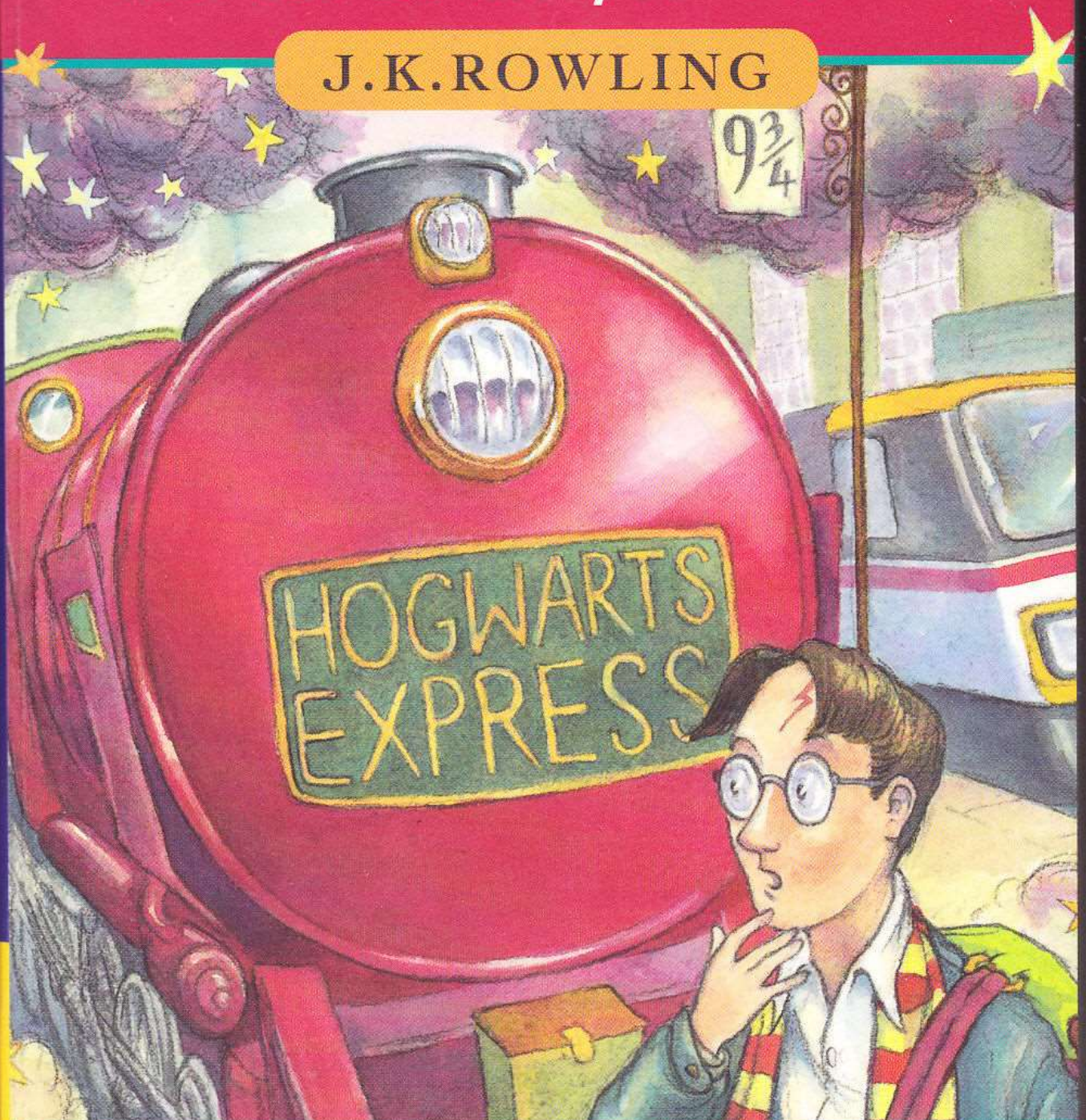
Example 2:

Genre: The genre of this story might be a mystery because in the first front cover Harry has a puzzled expression on his face, suggesting that he will need to work something out in the story that he does not yet know the answer to.

HARRY POTTER

and the Philosopher's Stone

J.K. ROWLING



"...this is a terrific book." *The Sunday Telegraph*

Journey beyond your imagination.

