

Task:

Yesterday you read the first few pages of chapter 6.

You will be writing a setting description from Salim's point of view. To support you with this task, research the surrounding areas of the London Eye. You could use Google maps and the walking stick man to help you.

Success Criteria:

1. Read the rest of chapter 6.
2. Think about what Salim sees on his way to the London Eye. What attractions are there? Please look at the map below.
3. Search through the text to find **clues** of what Salim sees.
4. Describe the setting from Salim's point of view.



Guys Tower

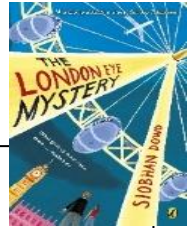


E.g.

As I walked along the busy roads near Embankment station, the sound of excited tourists reached my ears. The anticipation of going on a tall structure was causing a flutter in the pit of my stomach.

Word bank:

Subordinate clauses	Adjectives	Nouns
Getting closer to the tall structure, Walking past excited tourists, Up ahead in the queue, Surrounding the London Eye	bustling tourists tallest structure sweeping views tourist attraction congested busy lively	London Eye River Thames South bank Big Ben Embankment station Houses of Parliament Golden Jubilee bridges



Task:

Yesterday you read the first few pages of chapter 6. Use your copy of the book to read to the end of chapter 6.

You will be writing a simple setting description about the London Eye. To support you with this task, **research** the surrounding areas of the London Eye. You could use Google maps and the walking stick man to help you.

Draw an image of the surrounding area near the London Eye. Label this with simple descriptions what Salim may see, feel or hear.



Subordinate clauses	Adjectives	Nouns
Getting closer to the tall structure, Walking past excited tourists, Up ahead in the queue, Surrounding the London Eye	bustling tourists tallest structure sweeping views tourist attraction congested busy lively	London Eye River Thames South bank Big Ben Embankment station Houses of Parliament Golden Jubilee bridges

