

## YEAR 4

### SUMMER TERM TOPIC

# FASHION – TASK 8

Hello Year 4,

Did you choose a designer that you like from the list you were given last week? They are all interesting for their ambitions to be sustainable and to create fashion that is respectful to the environment and to people.

This week, you are going to design an outfit of your own, based on the designer that you chose last week. So, if you haven't done last week's task, don't worry about doing the collage but do look at the designers online and choose one that inspires or interests you for their style and how they are sustainable.

<https://motif.org/news/top-sustainable-fashion-designers/>

---

LO: To research and develop a design

This is a DESIGN AND TECHNOLOGY TASK

### **BIG QUESTION:**

**Can you identify key features of a designer's style and use these to inspire your own design?**

Creating



I use my knowledge to  
create new ideas.

**Vocabulary:** sustainability, design philosophy, social responsibility, textiles, fabric, recycling, material, features

## **Activity 1**

Look again at your chosen designer. Make a **mind map** with their name in the centre. Around their name, write:

1. any features of their style that you observe from looking at their clothes e.g. lots of stripes
2. key features of their method of working e.g. uses recycled materials

## **Activity 2**

Begin to organise your ideas for an outfit that you would like to make.

1. Decide if it is to be for a male or female.
2. Base it in some way on the style of your chosen designer e.g. purpose, colour, fabric, message, length, accessories.
3. Represent nature in some way e.g. in its pattern, shape, colour.
4. Design it out of recycled fabrics ONLY e.g. unwanted clothes, old bed sheets etc.

**Complete a design sheet (on the next pages) – there is one for male and one for female. They show the front and back.**

**Do not make it yet. You need to spend the time this week thinking and designing. This is a really important part of the whole process and should not be rushed.**

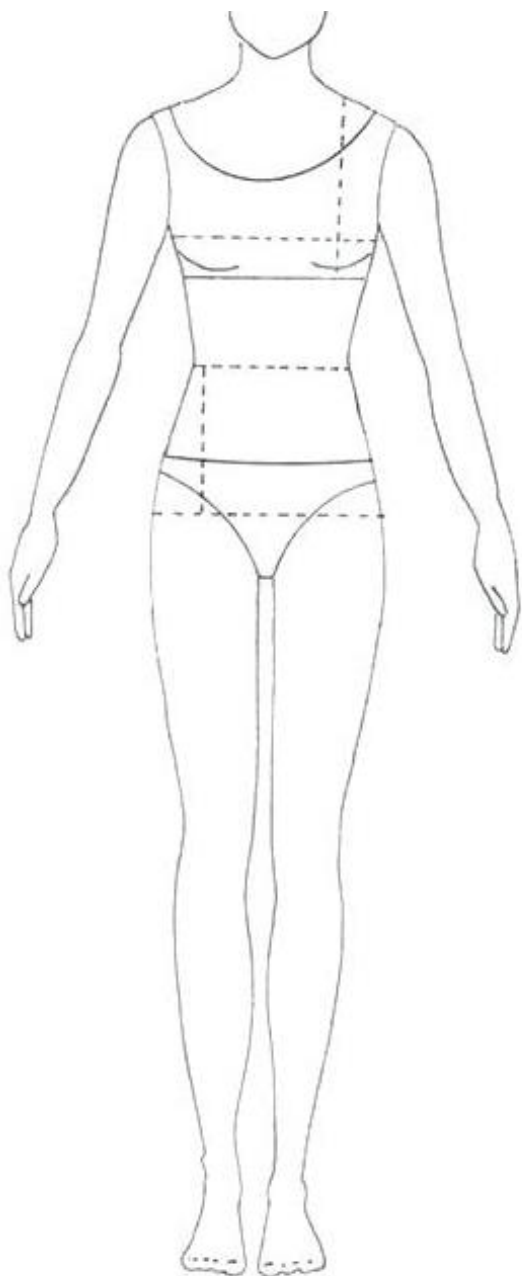
**The designer my sketches are based on is:**

**The recognisable features of her designs are:**

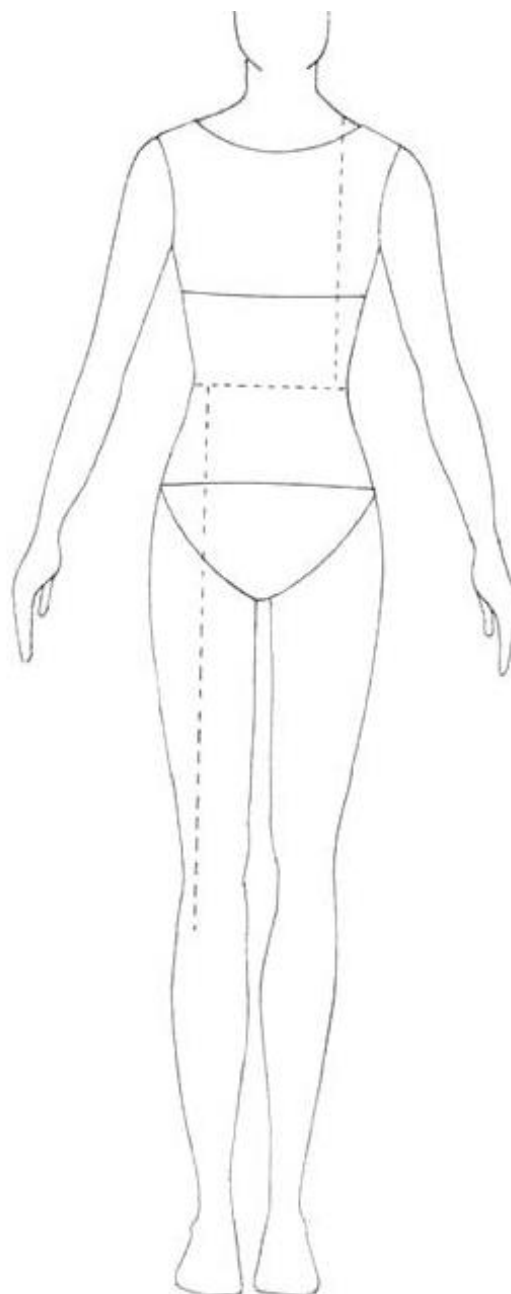
**How the design represents nature:**

**It will be made out of:**

**front**



**back**



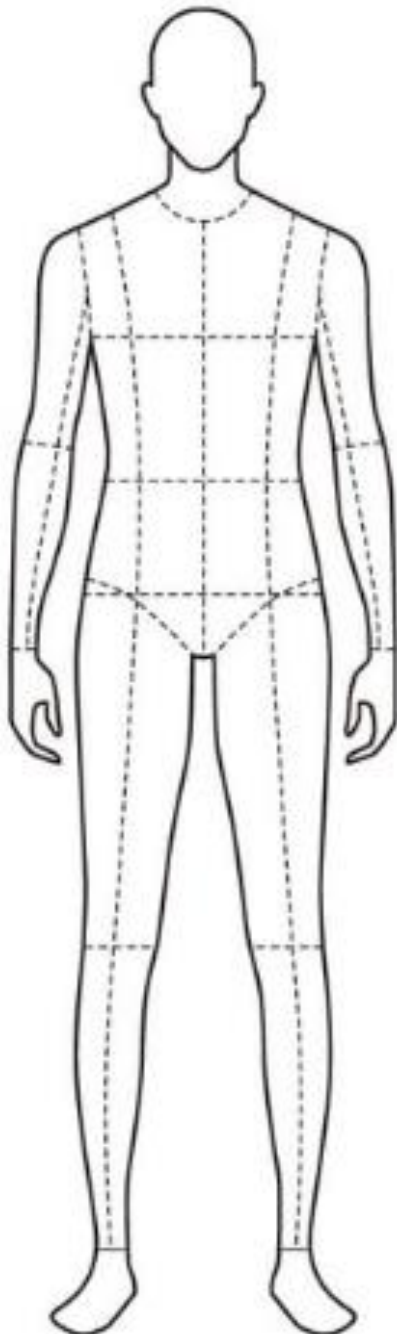
The designer my sketches are based on is:

The recognisable features of her designs are:

How the design represents nature:

It will be made out of:

**front**



**back**

