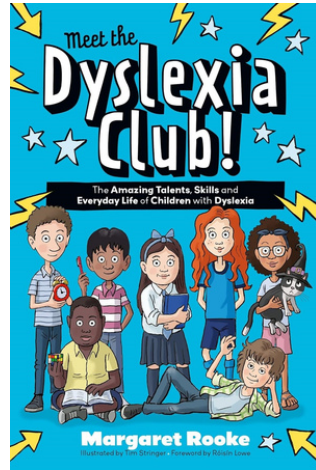


7th March 2025

Newsletter

World Book Day 2025



As part of our whole school Oracy focus, all classes took part in storytelling inspired by Our Tower by Joseph Coelho.

We enjoyed an author visit from Margaret Rooke, who writes children's books about dyslexia.

The day was punctuated by opportunities to read for pleasure and for older children to buddy up and read with younger ones.

Another powerful and exciting celebration of reading.

Year 3 become Celts for the day



For our Year 3 topic 'Stone Age to Iron Age', we went on a trip to Celtic Harmony.

We have had a day full of activities that replicated a day in the life of Stone Age people.

We were hunter gatherers, hunting animals and foraging for plants and mushrooms.

We learnt about flint-knapping and making tools and weapons.

We made our own dens and learnt how to make fire and how to make soup with the things we had foraged!

Year 5 Assemblies

Year 5 delighted us with class assemblies this week, teaching parents all about Anglo Saxon history using artefacts, reports and mini plays.

more news on the website- [click here](#)



Key Dates for your Diary

Yr 5 Hornbeam - Treginnis Farm: Monday 17 - Friday 21 March

Yr 5 Scycamore - Treginnis Farm: Monday 24 - Friday 28 March

SEN Coffee Morning: Wednesday 19 March from 9am - Art Space

Comic Relief - Friday 21 March - Red Noses £2 

Yr 2 Scootability: Thursday 27 March - 9am-12pm - Playground

Yr 3 - LSO Concert - Barbican: Monday 31 March -10.30-2.30 (*packed lunch*)

PTA Events

Quiz Night: Thursday 27 March - 6.30-9pm - **Come along join the fun!**

Reception Cake Stall: Friday 28 March - from 3.15pm - Playground

Magic Show: Wednesday 30 April - KS1 5-6pm - KS2 6.15-7.15pm



CANONBURY



Amazing Fundraising continues!

Fireworks: £1722.61

Christmas Fair: £3233.91

Y5 fundraising: £904.11 (Fireworks snacks & waffles, cake stall and Xmas Fair lollipops)

Y6 fundraising: £449.56 (Fireworks night snacks, cake stall)

New Year Disco : £1071

Yr 4 Cake Stall: £300

Yr 5 Cake Stall EXTRA: £230



Yr 2 Cake Stall: £301.70

TOTAL year to date - £8212.89



Hi parents/carers of young people at Canonbury Primary School. My name is **Uma** and I work **Bright Futures**, a service offered by Islington Council to support young people and their families.

Is your young person....

- struggling academically?
- facing anxieties around attending school?
- struggling with morning routines and arriving late for school?
- presenting challenging behaviour at home?



I will be available at the school **every other Thursday morning at 8:45am** (book in at the school office) to have a friendly chat about what we offer. I can signpost you to other services, offer information, advice, and guidance, book a meeting with you and the school, and offer you a safe space to discuss what might be going on.

I know it can feel overwhelming and daunting at times to reach out, but no struggle is too small - we all need a little help sometimes.

Attendance, Punctuality & Superstar Winners

School Attendance

🎯 Islington target is 96%

Canonbury this week: 95%

Attendance Trophy

Rec - Cherry Tree Class 93.6%
Y1/2 - Pear Tree Class 98%
Y3/4 - Lime Tree Class 99%
Y5/6 - Sycamore Tree Class 99%



Punctuality Trophy

Reception - Cherry Class 44 Mins
Y1/2 - Pear Tree Class - 5 Mins
Y3/4 - Lime Tree Class - 14 Mins
Y5/6 - Sycamore Tree Class - 9 Mins



Canonbury Superstars
This Week


- Year 1 Chestnut - Claire
- Year 1 Pear - Zara
- Year 2 Beech - Willow
- Year 2 Silver Birch - Yagiz
- Year 3 Bay - Tala
- Year 3 Lime - Toena
- Year 4 Hawthorn - Class
- Year 4 London Plane - Class
- Year 5 Hornbeam - Liana
- Year 5 Sycamore - Ali Baran
- Year 6 Ash - Isaiah
- Year 6 Oak - Milan

Be Ready...

Canonbury Primary School

The gate is open at 8:45 am

After 9am is late



Be ReadyTo Learn

Please support your child by making sure they are at school, ready to start the day with everyone - from 8:45am.

Prizes to be won

Canonbury Quiz night

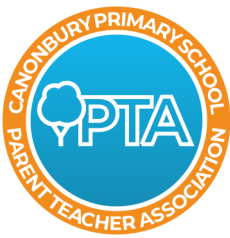
Hosted by Year 6

Ash & Oak

27TH MARCH

DOORS OPEN AT 6:30

£15 Entry + Dinner 3 Courses
With a glass of bubbles on entry



CANONBURY



PTA and Foundation

WAYS TO GET INVOLVED

- *COME TO EVENTS*
- *SPREAD THE WORD*

HELP at EVENTS

- *Volunteer to help run a stall
- * Donate supplies for events
- *Bake for Cake Stalls
- *Help with set up or clean up at events

FINANCIAL HELP

- *Find raffle prize donors or other sponsorship
- *Corporate Match Funding
- *One-off or monthly donation
- *Fundraise while you shop - Give as You Live

ADMINISTRATIVE HELP

- *Help organise events
- *Design posters
- * Maintain PTA supplies in the Dungeon
- *Help research and apply for grants
- *Brainstorm new fundraising ideas

VACANT ROLES

- *Foundation Treasurer - to manage accounts and maintain financial records
- *PTA Communications Officer- to produce materials to advertise and report on PTA events



Join the PTA Whatsapp Group to learn more and stay informed or email canonburypta@gmail.com or canonburyfoundation@gmail.com



CANONBURY



PTA and Foundation

Does your Employer offer a Corporate Match Funding Scheme?

Did you know that many companies offer their employees Matched Fund Schemes, whereby employers match money raised by a given charity.

As Canonbury Foundation is a registered charity, these schemes are an excellent way of raising additional money for our school. Our Christmas or Summer Fair is an ideal time to ask your HR department if they offer Matched Funding and a little bit of your time could raise double the funds for our school.

If you work for an organisation that has a Matched Funding Policy, any money you raise could be matched by your employer. Companies may match the fundraising total for an event, or for the stall that their employee is working on. Usually, the employee will need to supply them with a letter from the organisation detailing the date and nature of the event, together with the total raised.

We understand that the high street banks, building societies, supermarkets and large corporations are likely to do match funding, but these schemes are not exclusive to the major corporate giants. If you work for an independent company, they may be interested in charitable giving through match funding too.

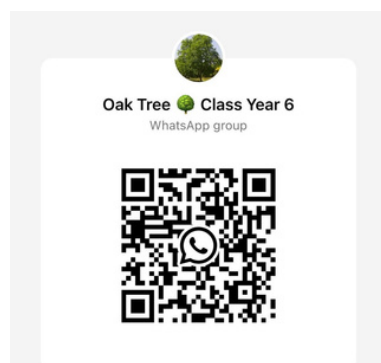
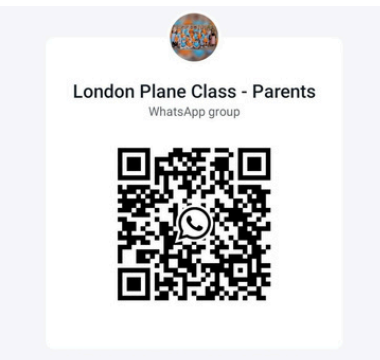
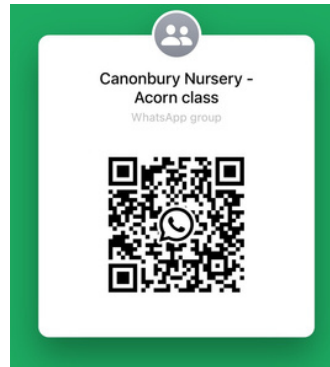
We would be grateful if you could see if your employer has a Matched Funding Scheme, or if they are willing to match fund any of our events. If you can't help out this time, but you know the company you work for has a Matched Funding Policy, please let us know by emailing canonburypta@gmail.com or canonburyfoundation@gmail.com





Did you know there is a WhatsApp group for your class? This will have been set up by your PTA class rep at some point to communicate about PTA events but many parents find it useful for organising birthday parties, lost property, queries on homework etc.

If you'd like to join your class WhatsApp group, scan your class QR code below:





Give as you Live®
Online

Generate free donations for us at over 5,500 online stores. It's completely free thanks to our partner, Give as you Live Online!



Simply scan the QR code with your mobile phone to sign up for free!

Just some of the 5,500 stores paying free donations:

M&S



booking.com

ebay

Expedia

Boots
let's get you

trainline

ASOS

Argos

Term dates for 2024/2025

AUTUMN TERM	Inset Day 1 – Monday 2nd September 2024
Autumn term 1	Tuesday 3rd September 2024 - Friday 25th October 2024
<i>Autumn Half-term</i>	<i>Monday 28th October 2024 - Friday 1st November 2024</i>
Autumn term 2	Monday 4th November 2024 – Friday 20th December 2024
<i>Christmas Holiday</i>	<i>Monday 23rd December 2024 - Friday 3rd January 2024</i>
SPRING TERM	Inset Day 2 – Monday 6th January 2025
Spring term 1	Tuesday 7th January 2025 - Friday 14th February 2025
<i>Spring Half-term</i>	<i>Monday 17th February 2025 - Friday 21st February 2025</i>
Spring term 2	Monday 24th February 2025 – Friday 4th April 2025
<i>Easter Holiday</i>	<i>Monday 7th April 2025 – Monday 21st April 2025 (Easter weekend: Friday 18th April - Monday 21st April 2025)</i>
SUMMER TERM	Inset Day 3 – Monday 2nd June 2025
Summer term 1	Tuesday 22nd April 2025 - Friday 23rd May 2025 (May Day Bank Holiday is on Monday 6th May 2024)
<i>Summer Half-term</i>	<i>Monday 26th May 2024 - Friday 30th May 2025 (Spring Bank Holiday will be taken on 26th May 2025)</i>
Summer term 2	Tuesday 3rd June 2025 – Friday 18th July 2025
<i>Summer Holiday</i>	<i>Monday 21st July 2025 - Monday 1st September 2025</i>
	Inset Day 4 – Monday 21st July 2025 Inset Day 5 – Tuesday 22nd July 2025

Everyone needs a little help sometimes

We know that being a parent is not always easy and that all families need support at some stage as children grow up

Bright Futures works with families who have children 5-19

We will work with you and your family to help you make lasting positive change and get the most out of family life

'Things right now are good. There have been quite a few challenges, but I feel stronger and more capable than I have for a while.'

- Bright Futures parent



Some ways we can help

- Advise on child behaviour, routines and parenting
- Strengthen family relationships and reduce conflict
- Help with your child's school attendance and learning
- Improve your families' health and wellbeing
- Offer advice on home finances, training and employment
- Connect you with activities and support in your local community



How to access Bright Futures services

Call our helpline: **020 7527 4343**

9am to 5pm, Monday to Friday or email

bright.futures@islington.gov.uk



Follow us on Twitter!
@IsBrightFutures



Like us on Facebook!
[fb.com/IsBrightFutures](https://www.facebook.com/IsBrightFutures)

Unlock extra benefits worth hundreds of pounds per child

If you receive certain benefits, your child could be eligible for so much more than free school meals! Register before the summer break to unlock:



A £15 supermarket voucher per child, per week – worth £90 per child over the summer break!



Access to the free Holiday Activities with Food programme. Book a place for your child at dozens of activities – there's something for everyone. Every activity includes a free healthy meal.



A £150 school uniform voucher for every child moving up from primary to secondary school.

DON'T MISS OUT

Register for benefits-related free school meals to unlock other support worth hundreds of pounds.

Turn over for details

Islington



Family Information Service

Looking for childcare, activities, or support for your family?

We provide free information and advice for families with children aged 0-25

Phone: **020 7527 5959**
Email: fis@islington.gov.uk
Web: www.islington.gov.uk/fis

www.facebook.com/islingtonfis



Did you know Islington Council have a short-term fund for people in work who rent their home?

To apply to the fund for a one off payment of £250

YOU MUST

- live in Islington
- pay rent
- be in employment
- less than £50,000 gross household earnings
- Combined household of savings of less than £5,000

PROVIDE PROOF OF

- rent - tenancy agreement of letter from landlord
- savings- recent bank statements for every household member
- earnings - recent payslip for every household member

If you think you might be eligible please visit

<https://www.islington.gov.uk/benefits-and-support/cost-of-living-support/help-for-renters-who-are-working>

Alternatively please contact the office who can arrange for you to meet with Bright Futures for support to complete the form.

Bright
Futures
ISLINGTON

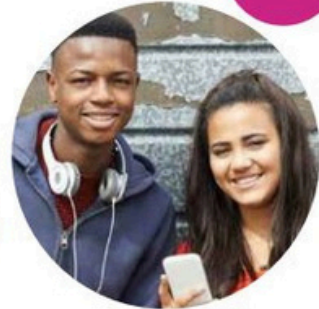
Islington



Islington FIS (Family Information Service) is a free advice service that helps families with children aged 0-25 find the right information and support.

Contact us to find out how we can help you with:

- Childcare and free early learning
- Bright Start services and children's centres
- Parenting
- Play and things to do
- Special Educational Needs and Disability (SEND)
- Family support
- Health
- Money advice
- Schools and learning
- Training and employment
- Becoming a childminder



We're helping
with the cost of living crisis

Free, confidential advice to maximise your income

Contact the council for friendly advice and support. We can help you work out what benefits and financial support you are entitled to, whether you will be better off in work, including the affordability of childcare, and we can help you to make a claim.

Call **020 7527 8222**
Email heretohelp@islington.gov.uk
Visit www.islington.gov.uk/moneyadvice

Get help finding and paying for childcare

Our Family Information Service (FIS) can help with:

- Free early education for 2, 3 and 4 year olds
- Childcare for under 5s, including childminders and Islington's funded nurseries, and childcare for over 5s - after-school and holidays
- 30 hours free childcare
- Tax-free childcare
- Childcare through Universal Credit
- Islington Childcare Bursary

Call **020 7527 5959**; email fis@islington.gov.uk or visit www.islington.gov.uk/fis

Apply for a Childcare Bursary

If you live in Islington, are claiming benefits and have a child aged 0-16 (or up to 18 with disabilities) who needs childcare, you may be entitled to a Childcare Bursary. The bursary is there to help parents who are starting work, a work placement, or short-term training to pay for childcare. It does not need to be paid back.

Call **020 7527 5891** or visit www.islington.gov.uk/childcarebursary

Help with your energy bills

Our energy advice team can provide guidance on reducing energy bills and speaking to your energy suppliers regarding utility debt and billing issues, help you apply for water discounts, support with energy efficiency grant applications and signpost to other public health interventions. To speak to a member of the SHINE team:

Call **0300 555 0195** or **020 7527 2121** lines are open 9am-5pm, Monday-Friday.
Or text **07800 006143** or visit shine-london.org.uk

Stay updated

Sign up for email updates on Islington news, events and other topics.
Visit www.islington.gov.uk/stayupdated

Join in the conversation

Follow [@IslingtonBC](https://twitter.com/IslingtonBC) on Twitter and search Islington Council on Facebook.

If your household income is feeling the squeeze, you'll find a wide range of support online at www.islington.gov.uk/costofliving

If you would like this document in large print or Braille, on audiotape or in another language, please telephone 020 7527 2000.