

17th January 2025

Newsletter



CANONBURY
PRIMARY SCHOOL

Create, discover and succeed together



Canonbury Disco



What better way to start 2025 at Canonbury than by holding a disco.

It may be cold and dark outside after 4pm - but inside the atmosphere was electric, faces were glowing and the dancing was hot. There was a great turn out for a brilliant night.

Thank you to parents in Year 5 and beyond who helped to make it happen - drinks, snacks, glow in the dark face paints - and tidied up at the end. A special mention to our wonderful Anita who brought her DJ and Dance skills along to get the party started - and all the children for making it a happy event

We raised £1071 towards the Year 5 Treginnis Farm residential trip. Targeting the disco money at Treginnis every year helps us to keep this 'Canonbury Special' trip going so that every Canonbury child will experience this once in a lifetime opportunity when they go into Year 5.



more news on the website- [click here](#)



Key Dates for your Diary

School Council - Houses of Parliament: Wednesday 22 January 2025 (*packed lunch*)

Yr 3 Lime Class - Swimming Lessons: Monday 3 - Friday 14 February - Highbury Pool - 2-3pm

Yr 6 Oak Class - Kench Hill residential trip: Monday 3 - Wednesday 5 February - Kent

Yr 6 Ash Class - Kench Hill residential trip: Wednesday 5 - Friday 7 February - Kent

Yr 3 Bay Class - Swimming Lessons: Monday 24 February - Friday 7 March - Highbury Pool - 2-3pm

Yr 3 - Celtic Harmony, Stone Age Day Camp: Thursday 27 February (*packed lunch*)

Yr 4 - Thames Explorer - Greenwich: Friday 7 March (*packed lunch*)

Yr 3 - LSO Concert - Barbican: Monday 31 March -10.30-2.30 (*packed lunch*)

PTA Events

Yr 4 Cake Stall: Friday 31st January - from 3.15pm - Playground

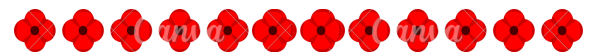
Yr 2 Cake Stall: Friday 28th February - from 3.15pm - Playground



CANONBURY



A big THANK YOU from our local Poppy Appeal representative - we raised **£153.40** with £60,850.31 the grand total in Islington



Amazing Fundraising continues!

Fireworks: £1722.61

Christmas Fair: £3233.91

Y5 fundraising: £904.11 (Fireworks night snacks & waffles, cake stall and Xmas Fair lollipops)

Y6 fundraising: £449.56 (Fireworks night snacks, cake stall)

New Year Disco : £1000 +

TOTAL year to date - £7310.19



Hi parents/carers of young people at Canonbury Primary School. My name is **Uma** and I work **Bright Futures**, a service offered by Islington Council to support young people and their families.

Is your young person....

- struggling academically?
- facing anxieties around attending school?
- struggling with morning routines and arriving late for school?
- presenting challenging behaviour at home?



I will be available at the school **every other Thursday morning at 8:45am** (book in at the school office) to have a friendly chat about what we offer. I can signpost you to other services, offer information, advice, and guidance, book a meeting with you and the school, and offer you a safe space to discuss what might be going on.

I know it can feel overwhelming and daunting at times to reach out, but no struggle is too small - we all need a little help sometimes.

Attendance, Punctuality & Superstar Winners

School Attendance

🎯 Islington target is 96%

Canonbury this week: 94.1%

Attendance Trophy

Rec - Cherry Tree Class 92%
Y1/2 - Silver Birch Class 97.9%
Y3/4 - London Plane Class 97.3%
Y5/6 - Ash Tree Class 95.3%



Punctuality Trophy

Reception - Cherry Class 20 Mins
Y1/2 - Chestnut Tree Class - 0 Mins
Y3/4 - Lime Tree Class - 90 Mins
Y5/6 - Hornbeam Tree Class - 30 Mins



Canonbury Superstars

This Week

- Year 1 Chestnut - Ivy
- Year 1 Pear - Veda
- Year 2 Beech - Santino B
- Year 2 Silver Birch - Lev
- Year 3 Bay - Freya
- Year 3 Lime - Kenya
- Year 4 Hawthorn - Beritan
- Year 4 London Plane - Raphael
- Year 5 Hornbeam - Sofia
- Year 5 Sycamore - Liyana
- Year 6 Ash - Edward
- Year 6 Oak - Eleanor

Be Ready...

Canonbury Primary School

The gate is open at
8:45 am

After 9am is late

Be ReadyTo Learn

Please support your child by making sure they are at school, ready to start the day with everyone - from 8:45am.

Libraries ReadLearnConnect

JOIN OUR GREAT WINTER READING CHALLENGE

Ask a member of staff today!

Read four books between 2 December and 28 February to get a certificate.

Suitable for ages 0 - 16

For more activities taking place in Islington Libraries, please visit www.islington.gov.uk/libraries

ISLINGTON
For a more equal future



CANONBURY



PTA and Foundation

WAYS TO GET INVOLVED

- *COME TO EVENTS*
- *SPREAD THE WORD*

HELP at EVENTS

- *Volunteer to help run a stall
- * Donate supplies for events
- *Bake for Cake Stalls
- *Help with set up or clean up at events

FINANCIAL HELP

- *Find raffle prize donors or other sponsorship
- *Corporate Match Funding
- *One-off or monthly donation
- *Fundraise while you shop - Give as You Live

ADMINISTRATIVE HELP

- *Help organise events
- *Design posters
- * Maintain PTA supplies in the Dungeon
- *Help research and apply for grants
- *Brainstorm new fundraising ideas

VACANT ROLES

- *Foundation Treasurer - to manage accounts and maintain financial records
- *PTA Communications Officer- to produce materials to advertise and report on PTA events



Join the PTA Whatsapp Group to learn more and stay informed or email canonburypta@gmail.com or canonburyfoundation@gmail.com



CANONBURY



PTA and Foundation

Does your Employer offer a Corporate Match Funding Scheme?

Did you know that many companies offer their employees Matched Fund Schemes, whereby employers match money raised by a given charity.

As Canonbury Foundation is a registered charity, these schemes are an excellent way of raising additional money for our school. Our Christmas or Summer Fair is an ideal time to ask your HR department if they offer Matched Funding and a little bit of your time could raise double the funds for our school.

If you work for an organisation that has a Matched Funding Policy, any money you raise could be matched by your employer. Companies may match the fundraising total for an event, or for the stall that their employee is working on. Usually, the employee will need to supply them with a letter from the organisation detailing the date and nature of the event, together with the total raised.

We understand that the high street banks, building societies, supermarkets and large corporations are likely to do match funding, but these schemes are not exclusive to the major corporate giants. If you work for an independent company, they may be interested in charitable giving through match funding too.

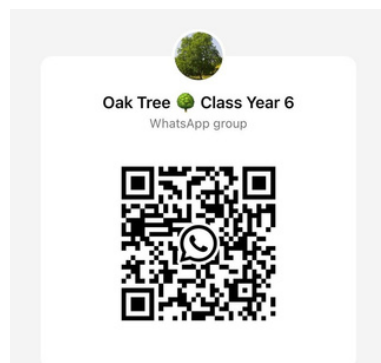
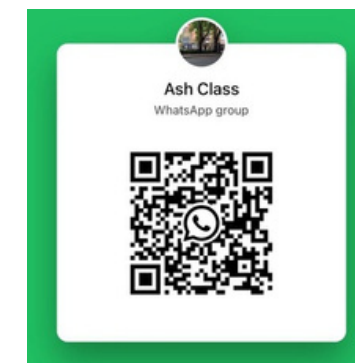
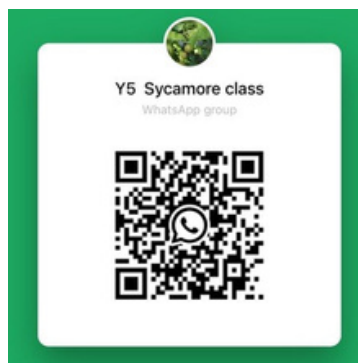
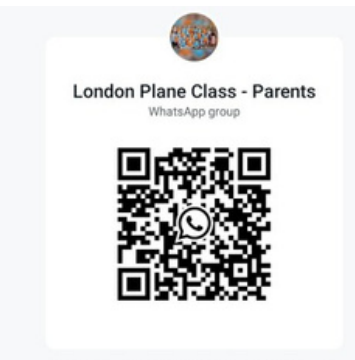
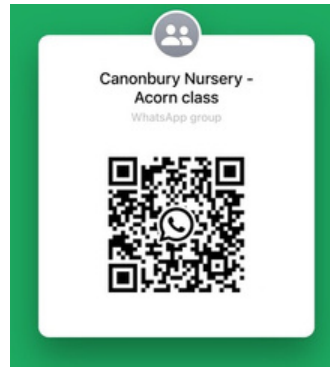
We would be grateful if you could see if your employer has a Matched Funding Scheme, or if they are willing to match fund any of our events. If you can't help out this time, but you know the company you work for has a Matched Funding Policy, please let us know by emailing canonburypta@gmail.com or canonburyfoundation@gmail.com





Did you know there is a WhatsApp group for your class? This will have been set up by your PTA class rep at some point to communicate about PTA events but many parents find it useful for organising birthday parties, lost property, queries on homework etc.

If you'd like to join your class WhatsApp group, scan your class QR code below:





Give as you Live®
Online

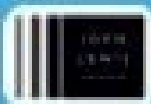
Generate free donations for us at over 5,500 online stores. It's completely free thanks to our partner, Give as you Live Online!



Simply scan the QR code with your mobile phone to sign up for free!

Just some of the 5,500 stores paying free donations:

M&S



booking.com

ebay

Expedia



trainline

ASOS



Term dates for 2024/2025

AUTUMN TERM	Inset Day 1 – Monday 2nd September 2024
Autumn term 1	Tuesday 3 rd September 2024 - Friday 25 th October 2024
<i>Autumn Half-term</i>	<i>Monday 28th October 2024 - Friday 1st November 2024</i>
Autumn term 2	Monday 4 th November 2024 – Friday 20 th December 2024
<i>Christmas Holiday</i>	<i>Monday 23rd December 2024 - Friday 3rd January 2024</i>
SPRING TERM	Inset Day 2 – Monday 6th January 2025
Spring term 1	Tuesday 7 th January 2025 - Friday 14 th February 2025
<i>Spring Half-term</i>	<i>Monday 17th February 2025 - Friday 21st February 2025</i>
Spring term 2	Monday 24 th February 2025 – Friday 4 th April 2025
<i>Easter Holiday</i>	<i>Monday 7th April 2025 – Monday 21st April 2025 (Easter weekend: Friday 18th April - Monday 21st April 2025)</i>
SUMMER TERM	Inset Day 3 – Monday 2nd June 2025
Summer term 1	Tuesday 22 nd April 2025 - Friday 23 rd May 2025 (May Day Bank Holiday is on Monday 6 th May 2024)
<i>Summer Half-term</i>	<i>Monday 26th May 2024 - Friday 30th May 2025 (Spring Bank Holiday will be taken on 26th May 2025)</i>
Summer term 2	Tuesday 3 rd June 2025 – Friday 18 th July 2025
<i>Summer Holiday</i>	<i>Monday 21st July 2025 - Monday 1st September 2025</i>
	Inset Day 4 – Monday 21st July 2025 Inset Day 5 – Tuesday 22nd July 2025

Everyone needs a little help sometimes

We know that being a parent is not always easy and that all families need support at some stage as children grow up

Bright Futures works with families who have children 5-19

We will work with you and your family to help you make lasting positive change and get the most out of family life

'Things right now are good. There have been quite a few challenges, but I feel stronger and more capable than I have for a while.'

- Bright Futures parent



Some ways we can help

- Advise on child behaviour, routines and parenting
- Strengthen family relationships and reduce conflict
- Help with your child's school attendance and learning
- Improve your families' health and wellbeing
- Offer advice on home finances, training and employment
- Connect you with activities and support in your local community



How to access Bright Futures services

Call our helpline: **020 7527 4343**

9am to 5pm, Monday to Friday or email **bright.futures@islington.gov.uk**



Follow us on Twitter!
@IsBrightFutures



Like us on Facebook!
[fb.com/IsBrightFutures](https://www.facebook.com/IsBrightFutures)

Unlock extra benefits worth hundreds of pounds per child

If you receive certain benefits, your child could be eligible for so much more than free school meals! Register before the summer break to unlock:



A £15 supermarket voucher per child, per week – worth £90 per child over the summer break!



Access to the free Holiday Activities with Food programme. Book a place for your child at dozens of activities – there's something for everyone. Every activity includes a free healthy meal.



A £150 school uniform voucher for every child moving up from primary to secondary school.

DON'T MISS OUT

Register for benefits-related free school meals to unlock other support worth hundreds of pounds.

Turn over for details

Islington



Family Information Service

Looking for childcare, activities, or support for your family?



We provide free information and advice for families with children aged 0-25



Phone: **020 7527 5959**
Email: fis@islington.gov.uk
Web: www.islington.gov.uk/fis

www.facebook.com/islingtonfis



Did you know Islington Council have a short-term fund for people in work who rent their home?

To apply to the fund for a one off payment of £250

YOU MUST

- live in Islington
- pay rent
- be in employment
- less than £50,000 gross household earnings
- Combined household of savings of less than £5,000

PROVIDE PROOF OF

- rent - tenancy agreement of letter from landlord
- savings- recent bank statements for every household member
- earnings - recent payslip for every household member

If you think you might be eligible please visit

<https://www.islington.gov.uk/benefits-and-support/cost-of-living-support/help-for-renters-who-are-working>

Alternatively please contact the office who can arrange for you to meet with Bright Futures for support to complete the form.

Bright
Futures
ISLINGTON

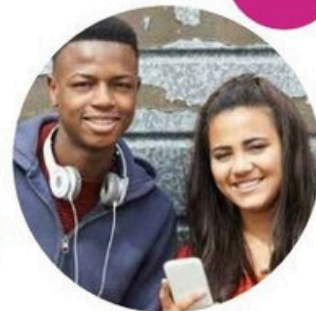
Islington



Islington FIS (Family Information Service) is a free advice service that helps families with children aged 0-25 find the right information and support.

Contact us to find out how we can help you with:

- Childcare and free early learning
- Bright Start services and children's centres
- Parenting
- Play and things to do
- Special Educational Needs and Disability (SEND)
- Family support
- Health
- Money advice
- Schools and learning
- Training and employment
- Becoming a childminder



We're helping
with the cost of living crisis

Free, confidential advice to maximise your income

Contact the council for friendly advice and support. We can help you work out what benefits and financial support you are entitled to, whether you will be better off in work, including the affordability of childcare, and we can help you to make a claim.

Call **020 7527 8222**
Email heretohelp@islington.gov.uk
Visit www.islington.gov.uk/moneyadvice

Get help finding and paying for childcare

Our Family Information Service (FIS) can help with:

- Free early education for 2, 3 and 4 year olds
- Childcare for under 5s, including childminders and Islington's funded nurseries, and childcare for over 5s - after-school and holidays
- 30 hours free childcare
- Tax-free childcare
- Childcare through Universal Credit
- Islington Childcare Bursary

Call **020 7527 5959**; email fis@islington.gov.uk or visit www.islington.gov.uk/fis

Apply for a Childcare Bursary

If you live in Islington, are claiming benefits and have a child aged 0-16 (or up to 18 with disabilities) who needs childcare, you may be entitled to a Childcare Bursary. The bursary is there to help parents who are starting work, a work placement, or short-term training to pay for childcare. It does not need to be paid back.

Call **020 7527 5891** or visit www.islington.gov.uk/childcarebursary

Help with your energy bills

Our energy advice team can provide guidance on reducing energy bills and speaking to your energy suppliers regarding utility debt and billing issues, help you apply for water discounts, support with energy efficiency grant applications and signpost to other public health interventions. To speak to a member of the SHINE team:

Call **0300 555 0195** or **020 7527 2121** lines are open 9am-5pm, Monday-Friday.
Or text **07800 006143** or visit shine-london.org.uk

Stay updated

Sign up for email updates on Islington news, events and other topics.
Visit www.islington.gov.uk/stayupdated

Join in the conversation

Follow [@IslingtonBC](https://twitter.com/IslingtonBC) on Twitter and search Islington Council on Facebook.

If your household income is feeling the squeeze, you'll find a wide range of support online at www.islington.gov.uk/costofliving

If you would like this document in large print or Braille, on audiotape or in another language, please telephone 020 7527 2000.