

Canonbury Home Learning

Year 6 Maths

Developing activity

Lesson 3

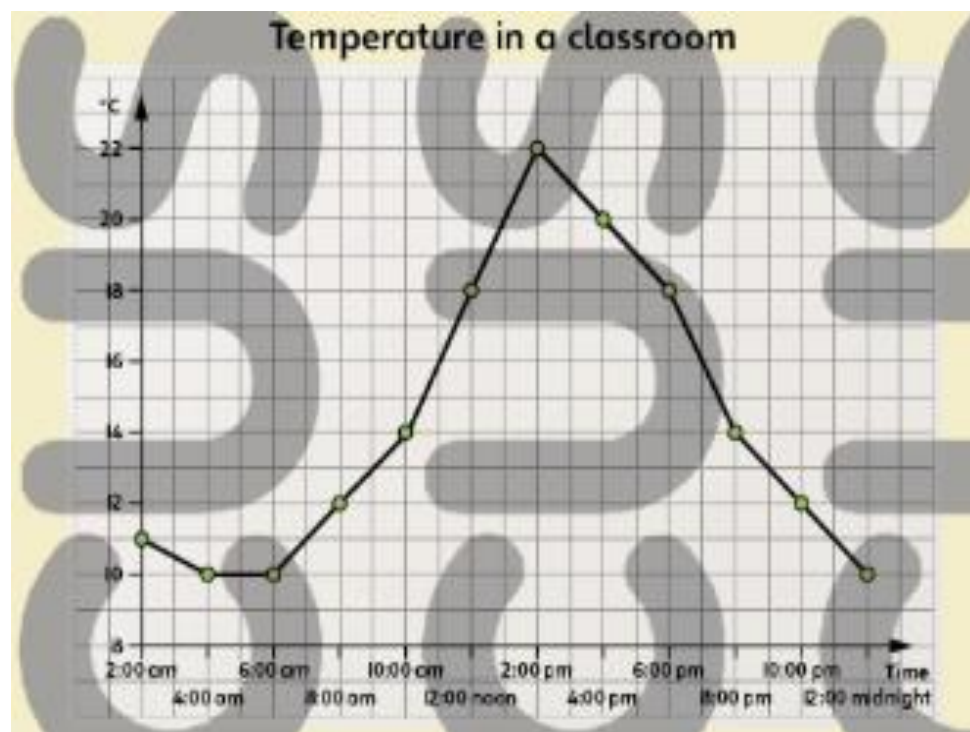
LO: TBAT interpret information on a line graph.

Success Criteria:

1. Read the graph.
2. To find information start with the x axis (horizontal line).
3. Then go up the y axis (vertical line).

Model

Watch my model video clip on Class dojo.



Now you try...

At what times is the temperature:

1 10 °C?	3 18 °C?	5 22 °C?
2 12 °C?	4 14 °C?	6 20 °C?

When is the temperature:

7 highest?	8 lowest?	9 half-way between 12 °C and 20 °C?
------------	-----------	-------------------------------------

Canonbury Home Learning

Year 6 Maths

Expected/ Greater depth activity

Lesson 3

LO: TBAT solve problems interpreting data on a line graph.

Task:

You are going apply your knowledge to solve several problems including interpreting data from line graph.

Success Criteria:

- | |
|---|
| 1. Read the graph. |
| 2. To find information start with the x axis (horizontal line). |
| 3. Then go up the y axis (vertical line). |

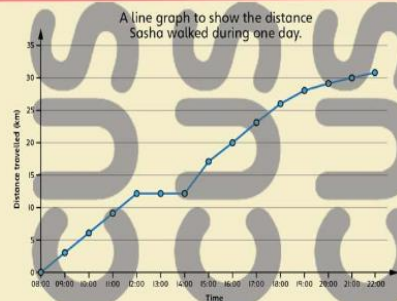
Recap:

Watch my model video clip on Class dojo.

Task 1

Practice

Look at this graph and answer the questions.



How far had Sasho walked by:

- 1 12 pm? 2 4 pm? 3 10 pm?

At what time did she reach:

- 4 5 km? 5 20 km? 6 25 km?
 7 At what time did she stop for a rest and how long did she stop for?
 8 How long did it take her to walk 10 km?
 9 Between which two times was she walking the fastest?
 10 Between which two times was she walking the slowest but still moving?

Task 2

Arithmetic

22 $0.8 \times 4 =$

23 $20\% = \frac{?}{20}$

24 $\frac{7}{8}$ of 64 =

25 $1\frac{1}{4} \times 4 =$

26 $42 \overline{)9875} =$

27 $\frac{3}{4} - \frac{1}{6} =$

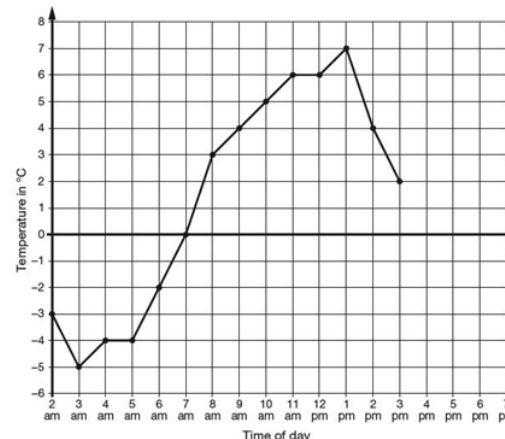
28 $\frac{1}{3} + 3 =$

Task 3

Problem Solving

Task 1

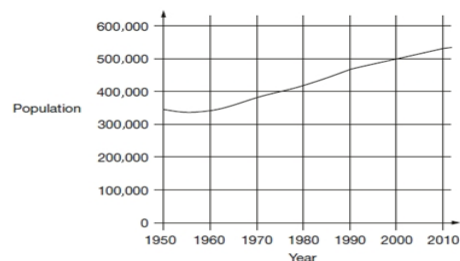
This graph shows the temperature in °C from 2 am to 3 pm on a cold day.



- How many degrees warmer was it at 3 pm than at 3 am?
 At 6 pm the temperature was 4 degrees lower than at 3 pm.
 What was the temperature at 6 pm?

Task 2

This chart shows the population of Cornwall from 1950 to 2010.



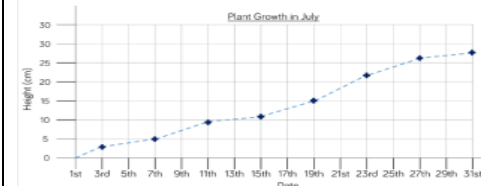
- Look at the chart.
 In which year did the population first reach 400,000?
 How much did the population increase from 1950 to 2000?
 What was the population of Cornwall in 2010?

Task 4

Reasoning

Task 1

Eva has created a graph to track the growth of a plant in her house.



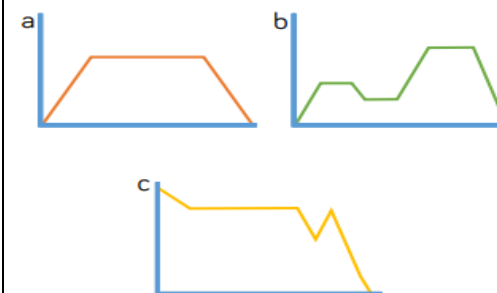
Eva recorded the following facts about the graph.

- a) On the 9th of July the plant was about 9 cm tall.
 b) Between the 11th and 19th July the plant grew about 5 cm.
 c) At the end of the month the plant was twice as tall as it had been on the 13th.
 Can you spot and correct Eva's mistakes?



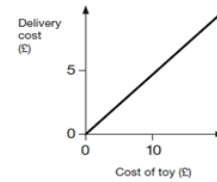
Task 2

Write a story and 3 questions for each of the 3 graphs below.

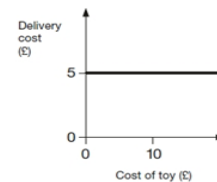


Task 3

Two companies sell toys online. They charge to deliver.
Describe the delivery cost of the second company.
The first company is done for you.

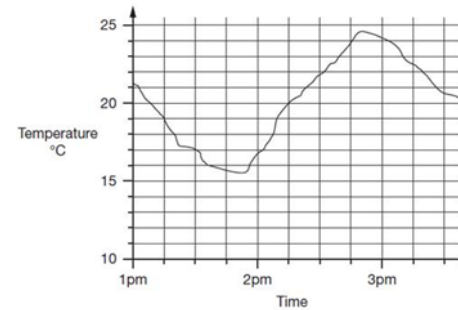


The more a toy costs, the more the delivery costs.



Task 4

This graph shows how the temperature changed in Liam's room one afternoon.



Estimate the temperature at 3:15pm.

Estimate the time when the temperature was highest.

How much did the temperature change from 2pm to 2:30pm? Give your answer to the nearest degree.

Task 3

This table shows the distance a lorry travelled during the day.

Time	Distance in miles
7.00 a.m.	10
8.00 a.m.	28
9.00 a.m.	42
10.00 a.m.	58
11.00 a.m.	70
12.00 a.m.	95
1.00 p.m.	95
2.00 p.m.	118

Create a line graph to represent the information, where the divisions along the x-axis are every two hours.

Create a second line graph where the divisions along the x-axis are every hour.

Compare your graphs. Which graph is more accurate?

Would a graph with divisions at each half hour be even more accurate?