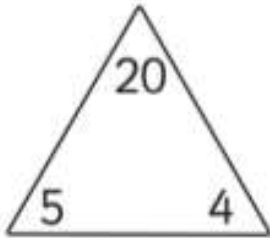
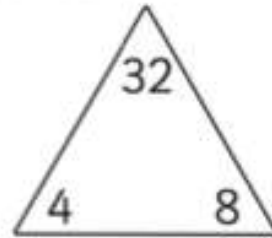


Starter

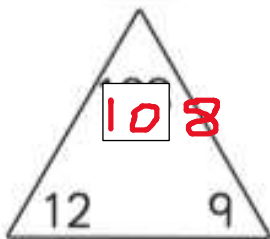
Number Families



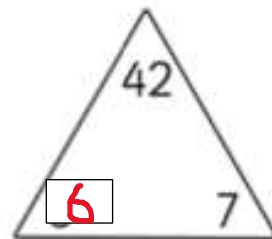
$$\begin{array}{l} 5 \times 4 = 20 \\ 4 \times 5 = 20 \\ 20 \div 4 = 5 \\ 20 \div 5 = 4 \end{array}$$



$$\begin{array}{l} 4 \times 8 = 32 \\ 8 \times 4 = 32 \\ 32 \div 4 = 8 \\ 32 \div 8 = 4 \end{array}$$



$$\begin{array}{l} 12 \times 9 = 108 \\ 9 \times 12 = 108 \\ 108 \div 12 = 9 \\ 108 \div 9 = 12 \end{array}$$



$$\begin{array}{l} 6 \times 7 = 42 \\ 7 \times 6 = 42 \\ 42 \div 6 = 7 \\ 42 \div 7 = 6 \end{array}$$



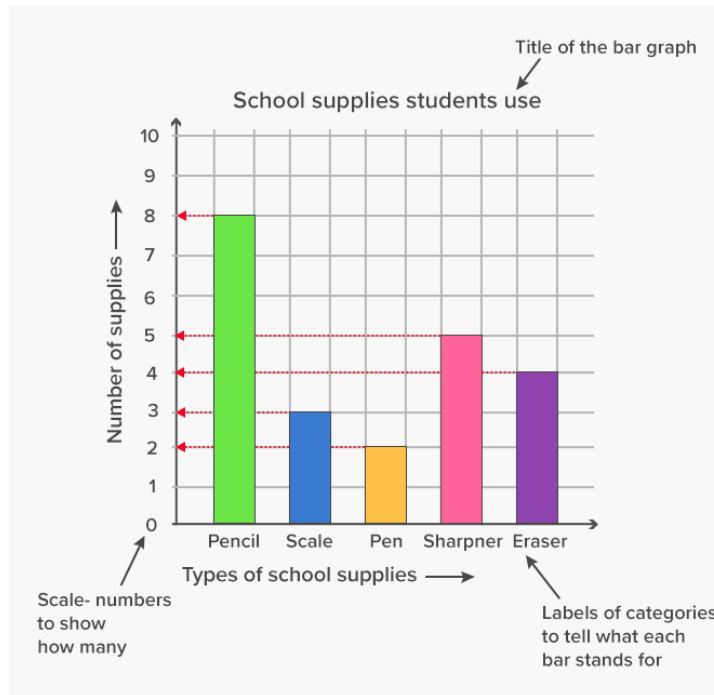
Summer week 7 Lesson 5 – 12.06.20

LO: To interpret and draw graphs

Success Criteria:

- | |
|---|
| 1. Include a title for your graph |
| 2. Label the x (horizontal) and Y (vertical) axis |
| 3. Write your numbers on the line for the y axis |
| 4. Use a ruler to draw bars. |

Model



Chocolate Bars Bar Line Chart Display Worksheet

Name: Date:

Here is a table of the chocolate bars sold to customers in a shop over 4 days:

| | Monday | Tuesday | Wednesday | Thursday |
|-----------------|----------|----------|-----------|----------|
| Mars | 2 | 1 | 3 | 4 |
| Twix | 0 | 2 | 2 | 3 |
| Galaxy | 5 | 3 | 2 | 0 |
| Milkyway | 2 | 2 | 2 | 2 |
| Bounty | 1 | 3 | 5 | 0 |
| Lion | 6 | 3 | 4 | 1 |
| Snickers | 1 | 3 | 2 | 2 |

Now complete these:

Draw a bar graph to show this data

Write 3 questions you could ask about your graph.

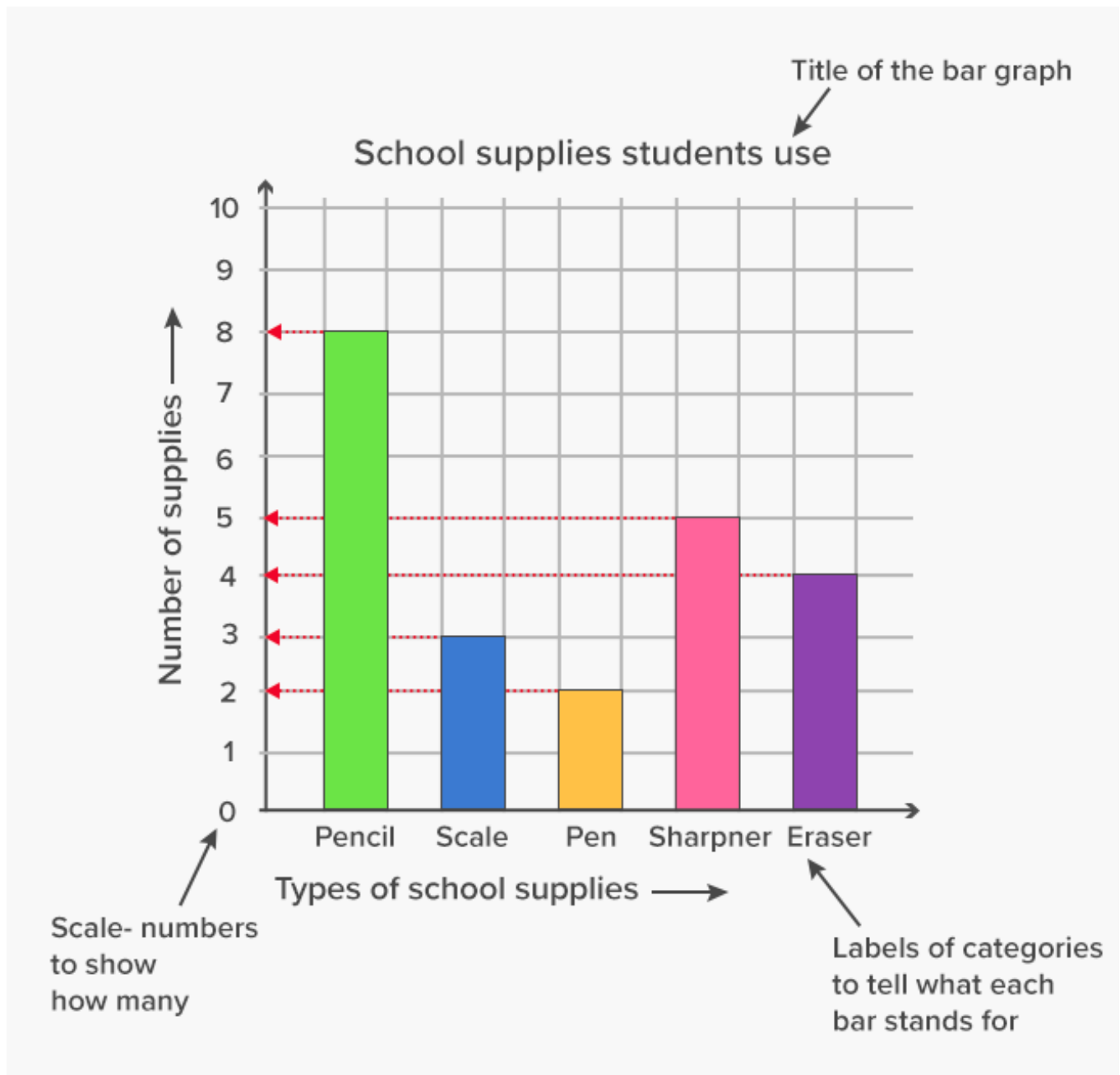
Summer week 7 Lesson 5 – 12.06.20

LO: To interpret and draw graphs

Success Criteria:

| |
|---|
| 1. Include a title for your graph |
| 2. Label the x (horizontal) and Y (vertical) axis |
| 3. Write you numbers on the line for the y axis |
| 4. Use a ruler to draw bars. |

Model:



Here is a tally chart of the birthdays of people in a class:



| Month | Tally |
|-----------|---------|
| January | /// |
| February | /// |
| March | /// /// |
| April | |
| May | |
| June | /// |
| July | /// |
| August | |
| September | /// |
| October | |
| November | |
| December | /// |

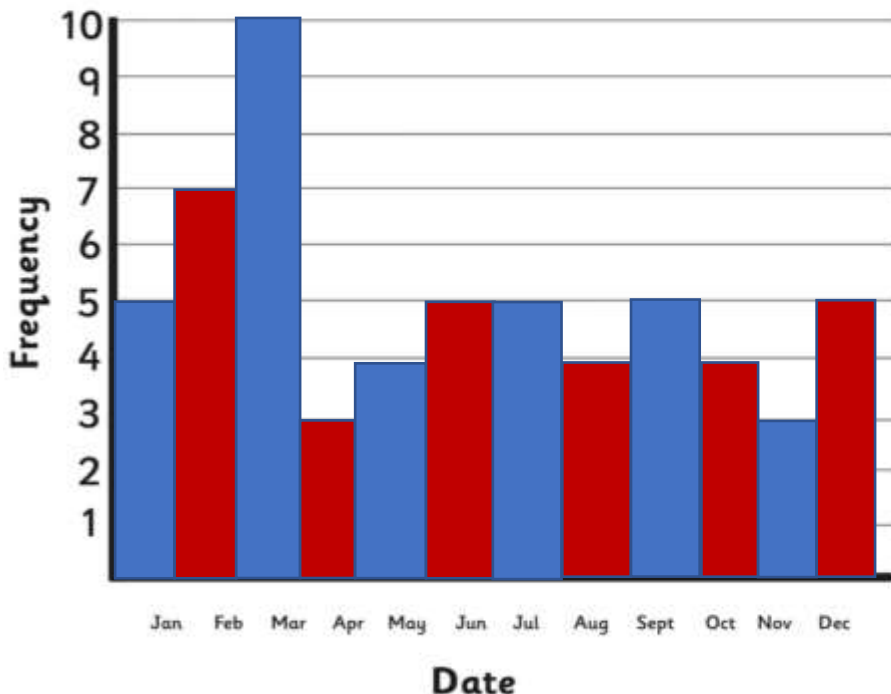


Birthdays Bar Line Chart Worksheet



Name: Date:

Using the tally chart, complete this bar line chart:



Questions:

1. Which month has the most birthdays? March
2. How many people have birthdays between April and July? 17
3. How many people have birthdays between August and December? 21
4. Which month has the least birthdays? November

Spicy/ Red Hot



- 1) a) *Edmund II*
 b) *212 days (accept other close answers)*
 c) *49 days*
- 2) *Children should choose a bar chart and reason that this is due to the difficulty in showing large numbers in a pictogram.*
- 3) a) *Children should add data for 212 days.*
 b) *Children should add data for 296 days.*

Look at the pictogram and bar chart showing the reigns of monarchs.

| King | Length of Reign = 5 days |
|----------------------------|---------------------------|
| Edward V of England | |
| Sweyn Forkbeard of England | |
| Lady Jane Grey | |

Length of Reign in Days

- 1) Look at both the pictogram and bar chart.
 - a) Which monarch reigned for the longest amount of time? _____
 - b) What is the difference in time between the longest reign and shortest reign shown? _____
 - c) What is the sum of the 2 shortest reigns combined? _____
- 2) Present all the data together as either a bar chart or pictogram on graph paper.
 Explain why you have chosen to present your data this way.

- 3) Add the following information to your bar chart or pictogram.
 - a) Lulach ruled for 9 days fewer than the longest serving monarch shown.
 - b) Dafydd ap Gruffydd ruled for 10 days more than Matilda and Edward V combined.