

Our unit of writing is based on The Mousehole Cat.

You need to look at the activities and choose which is best for you.



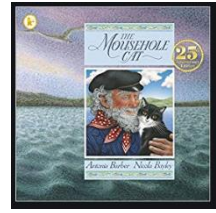
Red hot is for people who want extra challenge.



Spicy is suitable for most.



Mild is good for children who need to build confidence, or have no one to help.



Vocabulary check:

courteous	Men were like mice in the paws in the paws of the Great Storm-Cat	She would not much care
Take a deep sigh	Well spoken	weep

I have done my best to screenshot clear images of the book. Click on this link to see a free PDF version of the book- but please do not go beyond these pages as it will prevent children making predictions.

<https://epdf.pub/the-mousehole-cat.html>



Then at last one evening, as old Tom sat with Mowzer on his knee, she felt him take a deep sigh.

"Mowzer, my handsome," he said, for he was a courteous and well-spoken man, "Mowzer, my handsome, it will soon be Christmas, and no man can stand by at Christmas and see the children starve.

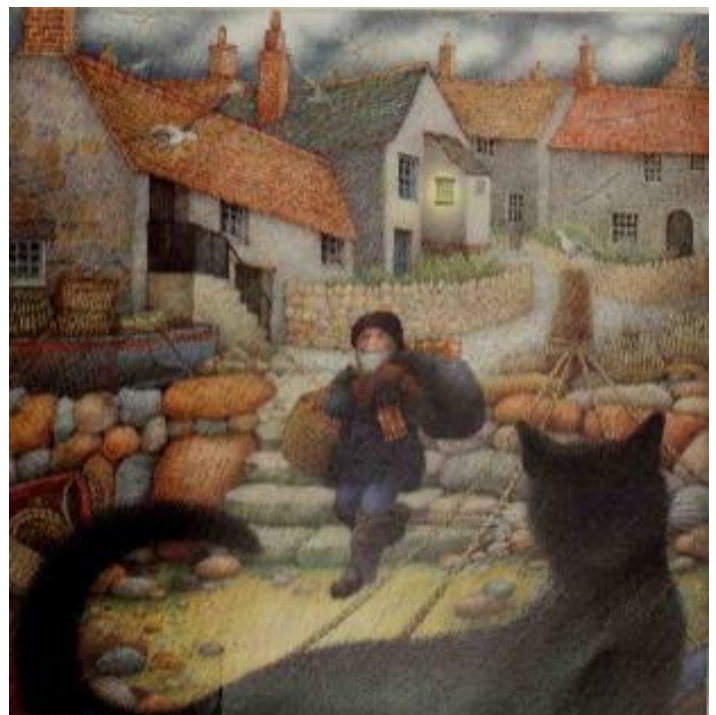
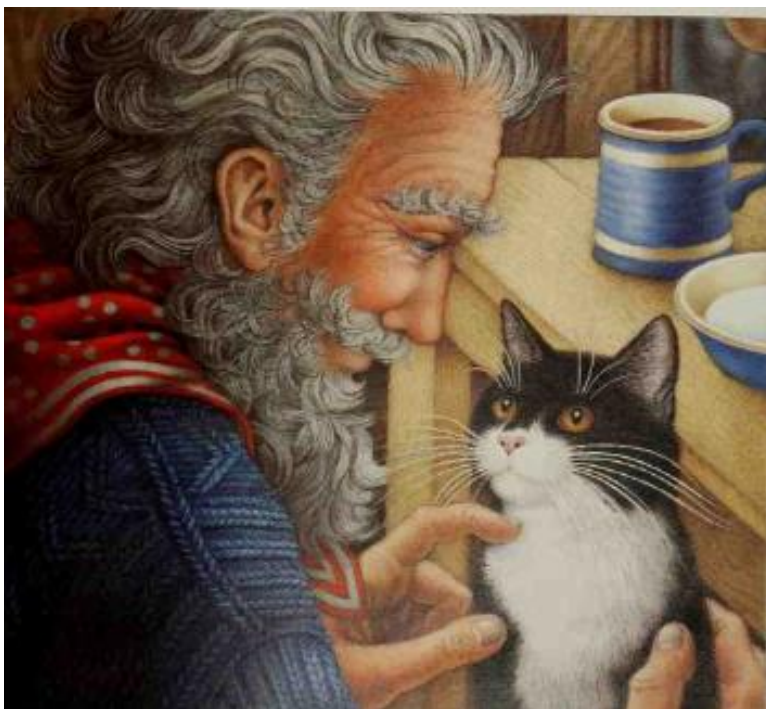
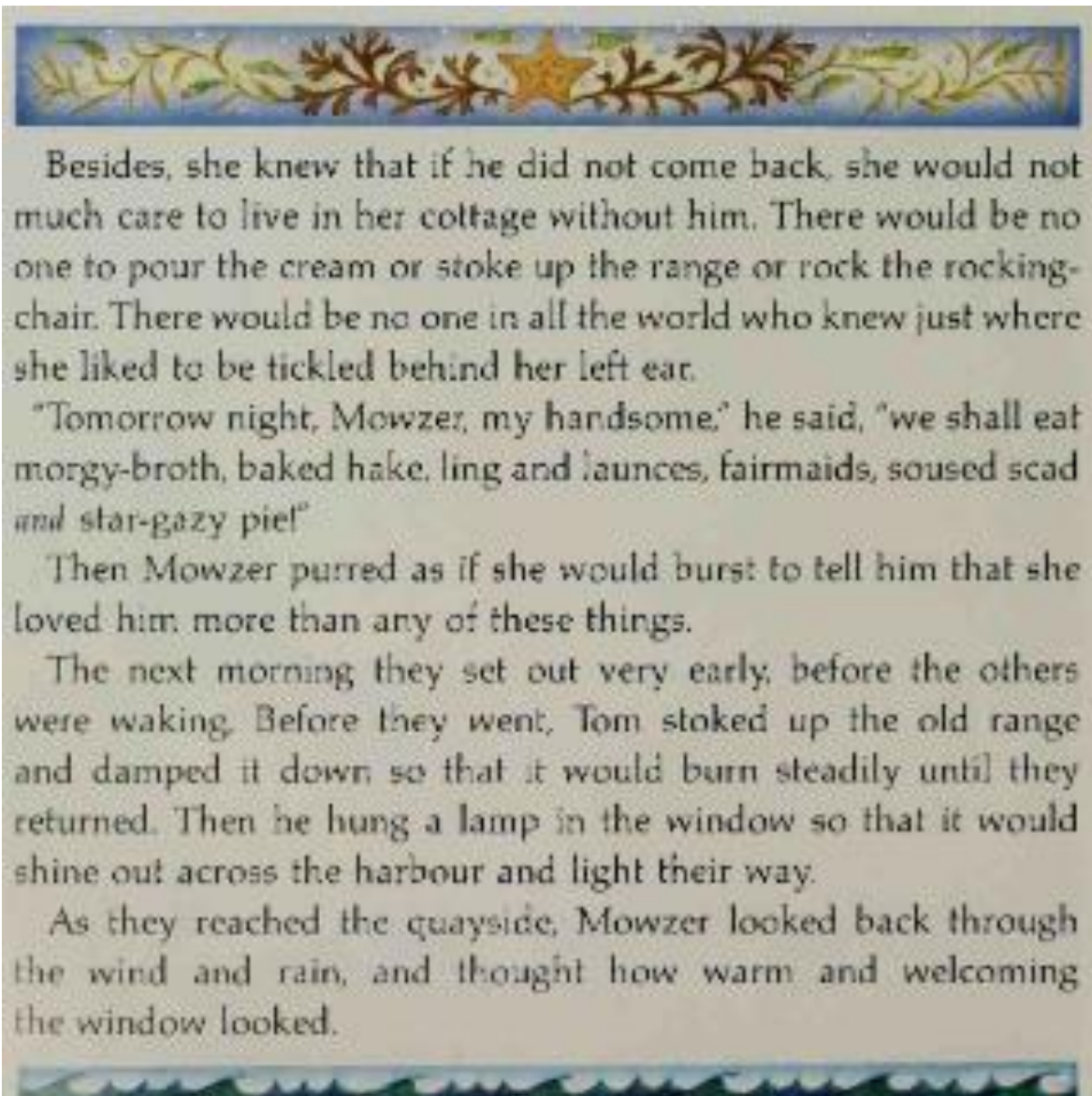
"Someone must go fishing come what may, and I think it must be me. It cannot be the young men, for they have wives and children and mothers to weep for them if they do not return. But my wife and parents are dead long since and my children are grown and gone."

Mowzer purred to tell him that she understood, for it was the same with her.

"I shall go out tomorrow, Mowzer, my handsome," said the old man, "and I shall not come back without a catch."

Mowzer purred louder to tell him that she would go with him. For he was only a man, she thought, and men were like mice in the paws of the Great Storm-Cat.





**Red Hot**

Each term we have reminded ourselves of how to punctuate direct speech. Can you remember the rules?

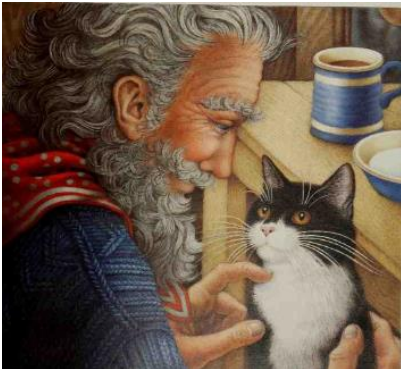
<https://www.bbc.co.uk/bitesize/clips/zvftsbk>



Task

Look at how the author has used dialogue.

Write at least one extended sentence that includes **direct speech** for each of the images below:



Example



*As the inn keeper drew a frothy pint of beer, a sticky brown liquid spilled onto Mowzer's head which made her growl. "You have not trained your human properly," she hissed to her son, "I will not come to this horrible place, full of clumsy humans!"*

Success Criteria

Think about the words the characters could say.
Start direct speech with capital letter.
Enclose direct speech with inverted commas.
Separate direct speech from rest of sentence with comma or other punctuation.
Use a variety of speech verbs other than <b>said</b>
Start a new line each time a different person speaks.

Spicy

Each term we have reminded ourselves of how to punctuate direct speech. Can you remember the rules?

<https://www.bbc.co.uk/bitesize/clips/zvftsbk>



Task

Write what the characters could say in each picture. Try to use speech punctuation.



Example



*Beer spilled on Mowzer's head and she hissed, "You have not trained your human properly!"*

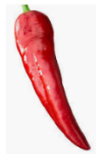
Success Criteria


Think about the words the characters could say.
Start direct speech with capital letter.
Enclose direct speech with inverted commas.
Separate direct speech from rest of sentence with comma or other punctuation.
Use a variety of speech verbs other than <b>said</b>
Start a new line each time a different person speaks.

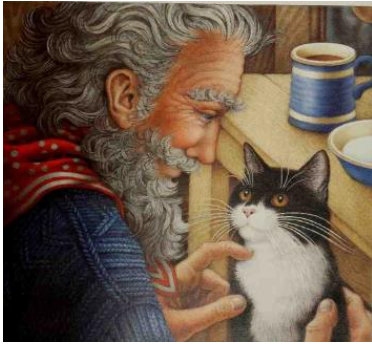
**Mild**

Ask a grown-up to read these pages of the story and talk about the pictures with you.

Write Speech bubbles to tell me what the characters say. Put a speech mark at the beginning and end of each sentence.



<b>A B C</b> capital letters	 finger spaces	● full stop	<b>Read</b> read it again
---------------------------------	-----------------------------------------------------------------------------------------------------	----------------	------------------------------



Example

*“The waves look so big outside the harbor wall.”*

*“I am so scared of your dad going fishing in that storm.”*

